

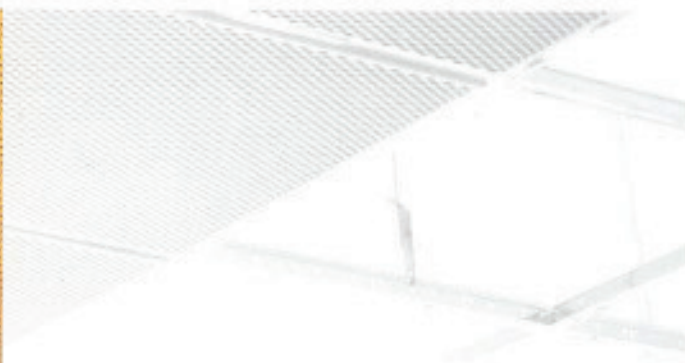


**GEIPEL**

METAL TILES  
CEILINGS  
LIGHTINGS

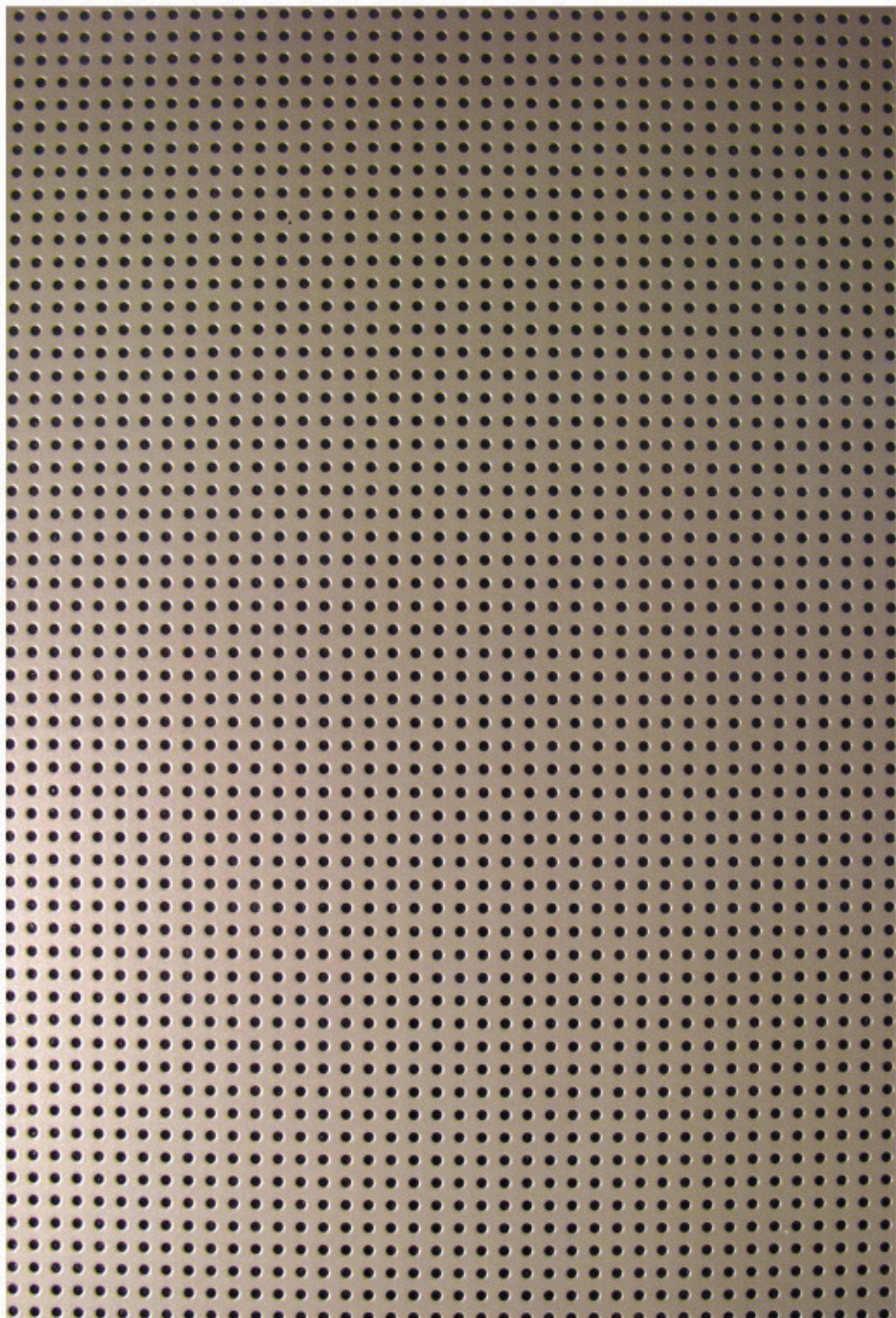


HIGH - TECH FROM GERMANY



PRODUCT  
CATALOGUE  
2004









## Company profile **Geipel** DECKEN- und PROFILSYSTEME GmbH



Quality and the power of innovation are the key to success. A high expert knowledge and state-of-the-art processing methods are the basis for excellent products, new designs and satisfied customers all around the world.

Made by GEIPEL and close to the customer worldwide



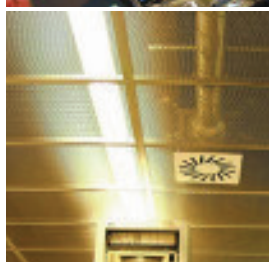
Being a pioneer in realising trends, chances and options of tomorrow and putting them consequently into practice for the market and the customers' benefits thanks to one's own capacity means to be up-to-date.

GEIPEL is this pioneering partner with the best perspectives for the future.

We are your partner and develop creative ideas and solutions for you and reliably ensure your demands of tomorrow. New flexible production strategies, the application of innovative processing technologies and the TOP quality in all facets of the

GEIPEL products mark the inherent power, the typical character and the progressiveness of our company.

- Each customer is our partner.
- The direct contact and the continuous communication are of utmost priority.
- An excellent service makes you sure that you can rely on GEIPEL in any situation.



The partnership with GEIPEL leads to success.



This is **Geipel**

## Products and design

Complete solutions for ceiling constructions, ensured by an enormous product range of profiles, sub-structure systems, bandraster constructions, metal tile ceilings, in linear or square type-design, as well as lightings and accessories make GEIPEL to a globally important producer of metal tile ceiling structures.

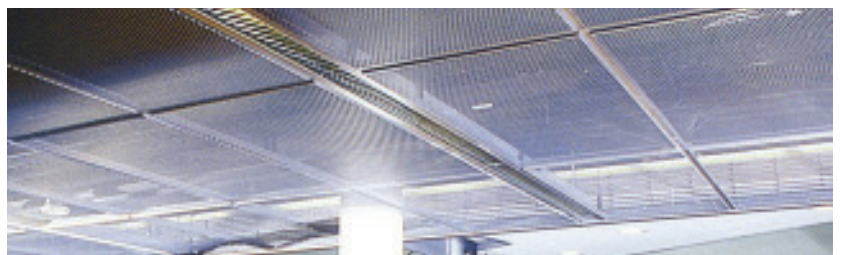
Top performances in the field of production are always based on the coordination of a qualified staff, most modern processing and measuring techniques and the use of high-quality materials.

Our products made in small or large batches are almost exclusively produced by CNC machines.

Standard metal tile ceiling systems or a HIGH-TECH design solution for auditoriums can be offered by our company not only at a high level of quality but also in an extraordinary design.

The almost impossible demand is often a challenge to search for new solutions.

And for this purpose, we combine the acoustic, light, air conditioning and design components to a harmonised unit.









## METAL CEILING TILES PERFORMED IN EXPANDED METAL DESIGN

Some things can be made a little bit better: that means lighter by using GEIPEL metal tiles performed in expanded metal design.

The GEIPEL metal tiles performed in expanded metal design have been especially developed for designer ceiling systems and are protected by industrial rights.

Combined with T-profiles, clip-in profile structures or bandraaster structures they lead to an innovative, aesthetically attractive ceiling system.

The large variety of shapes and colours allows to install these ceilings into all kinds of buildings.

**ADVANTAGES** in comparison with tiles performed in expanded metal are the following ones:

- easy and faster installation
- lower weight of the ceiling
- better workability of the material, particularly for notches and tiles adjusted to the room size
- larger variety of ceiling types and colours



Fair stand at the BAU-MESSE (construction fair) 2003 in MUNICH (Germany)

### TECHNICAL SPECIFICATION

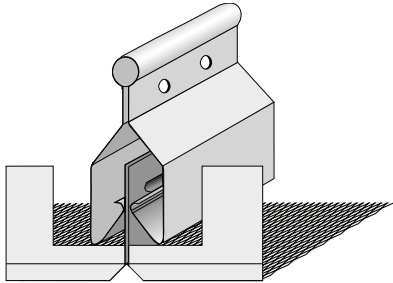
- Material:** – steel sheet, electrolytically or sendzimier-galvanized, aluminium on request
- Thickness:** – 0.63 mm, other thickness on request
- Colour:** – polyesterpowder coated in the
- standard colours – GEIPEL standard ceiling colour white
  - RAL 9006, white aluminium
  - special colours – on request (according to RAL)
- Perforation:** – different mesh designs possible on request
- a black acoustic fleece can be put to the back inside by the manufacturer



ORB radio archive POTSDAM/BABELSBERG (Germany)

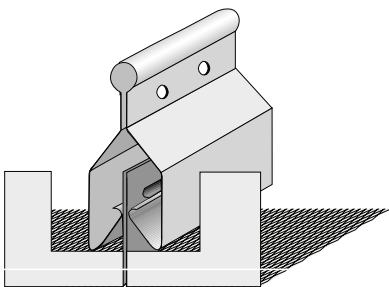
## METAL CEILING TILES PERFORMED IN EXPANDED METAL DESIGN

### Installation types for metal tiles performed in expanded metal design



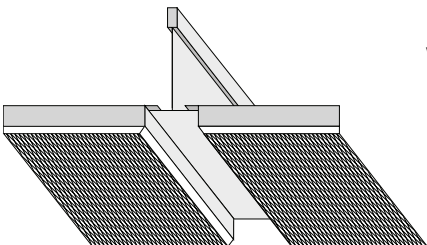
with bevel

clip-in profile sub-structure system  
with clip-in or clip-in/hinge-down tiles,  
square type, modules 600 and 625,  
with bevel



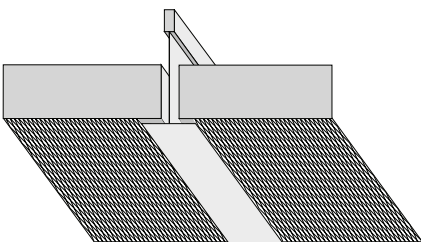
without bevel

clip-in profile sub-structure system  
with clip-in or clip-in/hinge-down tiles  
as rectangular tiles, with sharp edges – without bevel



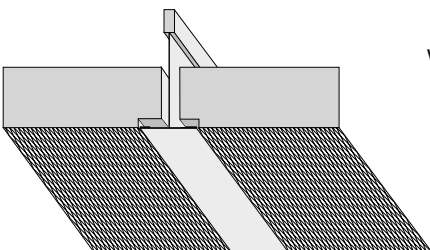
with bevel

T-substructure system with metal tile  
as lay-in tile, square type, modules 600 and 625,  
regular design, with bevel



without bevel

T-substructure system with metal tile  
as lay-on tile, square type  
or rectangular tile, with sharp edges – without bevel



without bevel

T-substructure system with metal tile  
as lay-in tile, square type,  
in flush structure

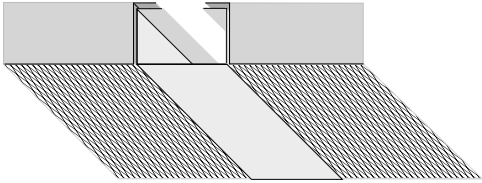






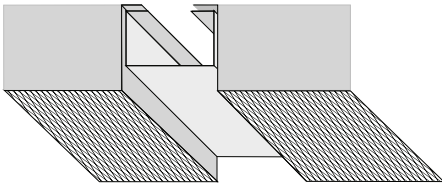
## METAL CEILING TILES PERFORMED IN EXPANDED METAL DESIGN

### Installation types for metal tiles performed in expanded metal design



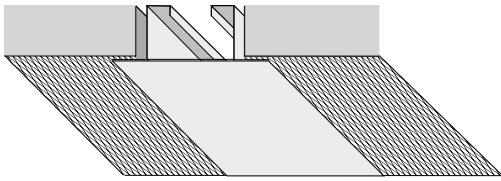
FLUSH

C-bandraaster sub-structure system  
with rectangular tiles, with sharp edges,  
flush with bandraaster



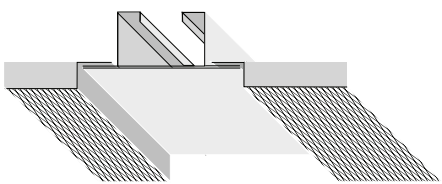
TEGULAR

C-bandraaster sub-structure system  
with rectangular tiles,  
in tegular design, with sharp edges



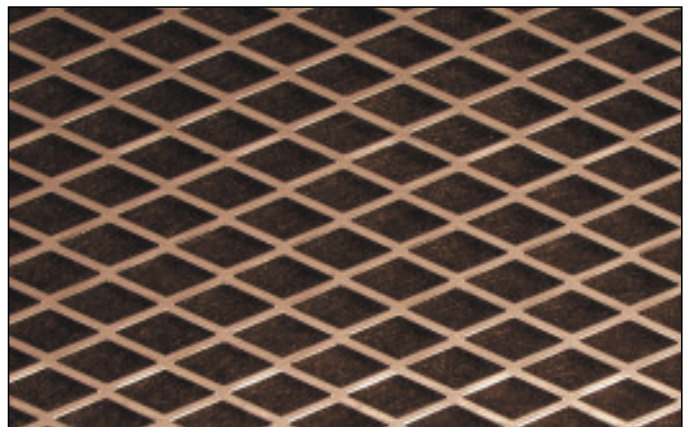
LAYING-ON

T-bandraaster sub-structure system  
with lay-on tiles,  
as rectangular tiles, with sharp edges



TEGULAR

T-bandraaster sub-structure system  
with rectangular tiles,  
in tegular design, with sharp edges









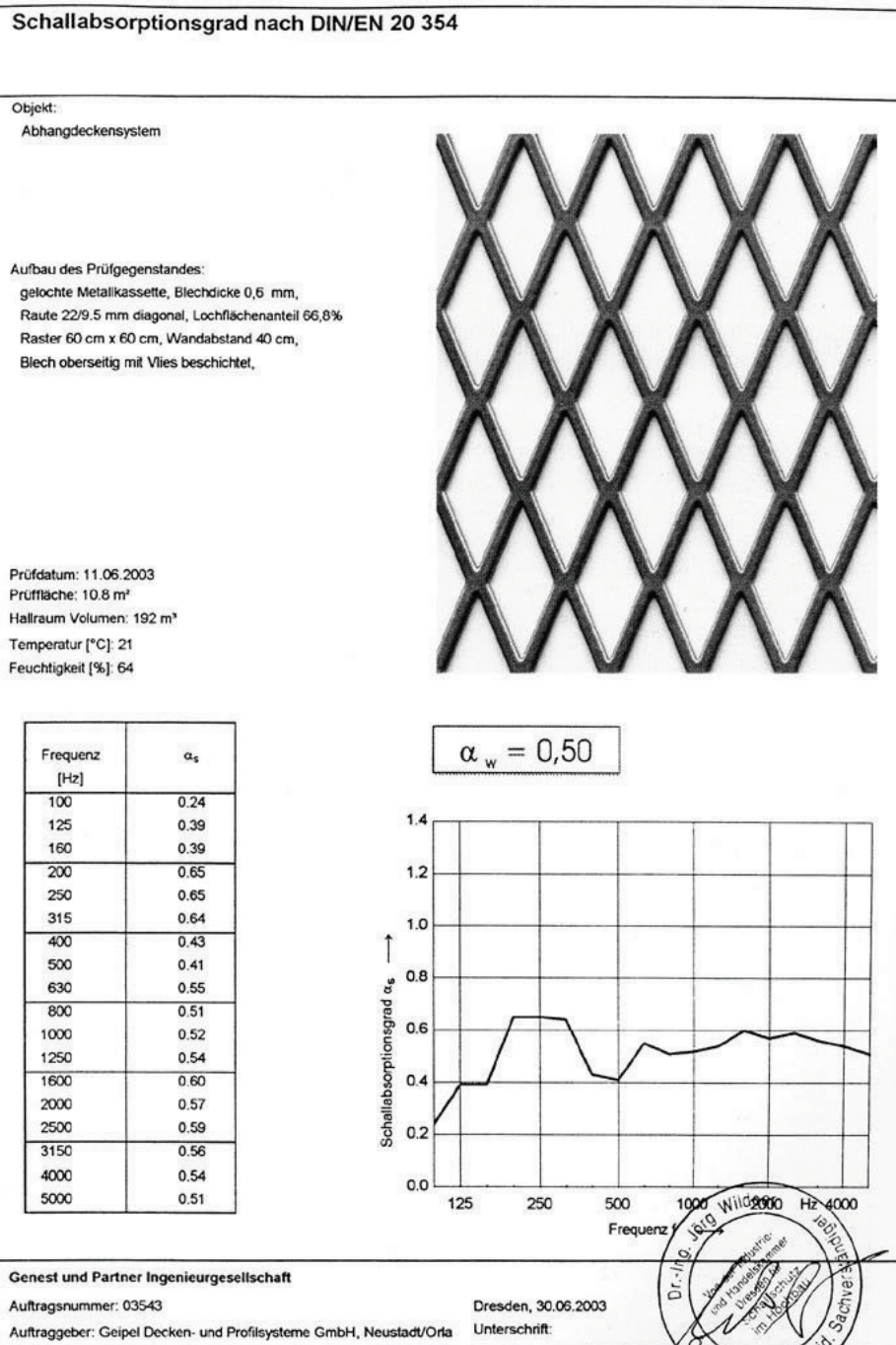
# TEST REPORTS ON NOISE ABSORPTION

## GEIPEL mesh perforation

perforated metal tile,  
mesh 22/9.5 mm, diagonal,  
grid 60 x 60 cm,  
sheet covered with fleece on the top side

sheet thickness 0.6 mm,  
percentage of perforation area: 66.8%,  
distance to the wall 40 cm,

Appendix 19 to the test report 03543 (Noise reduction coefficient according to DIN/EN 20 354)



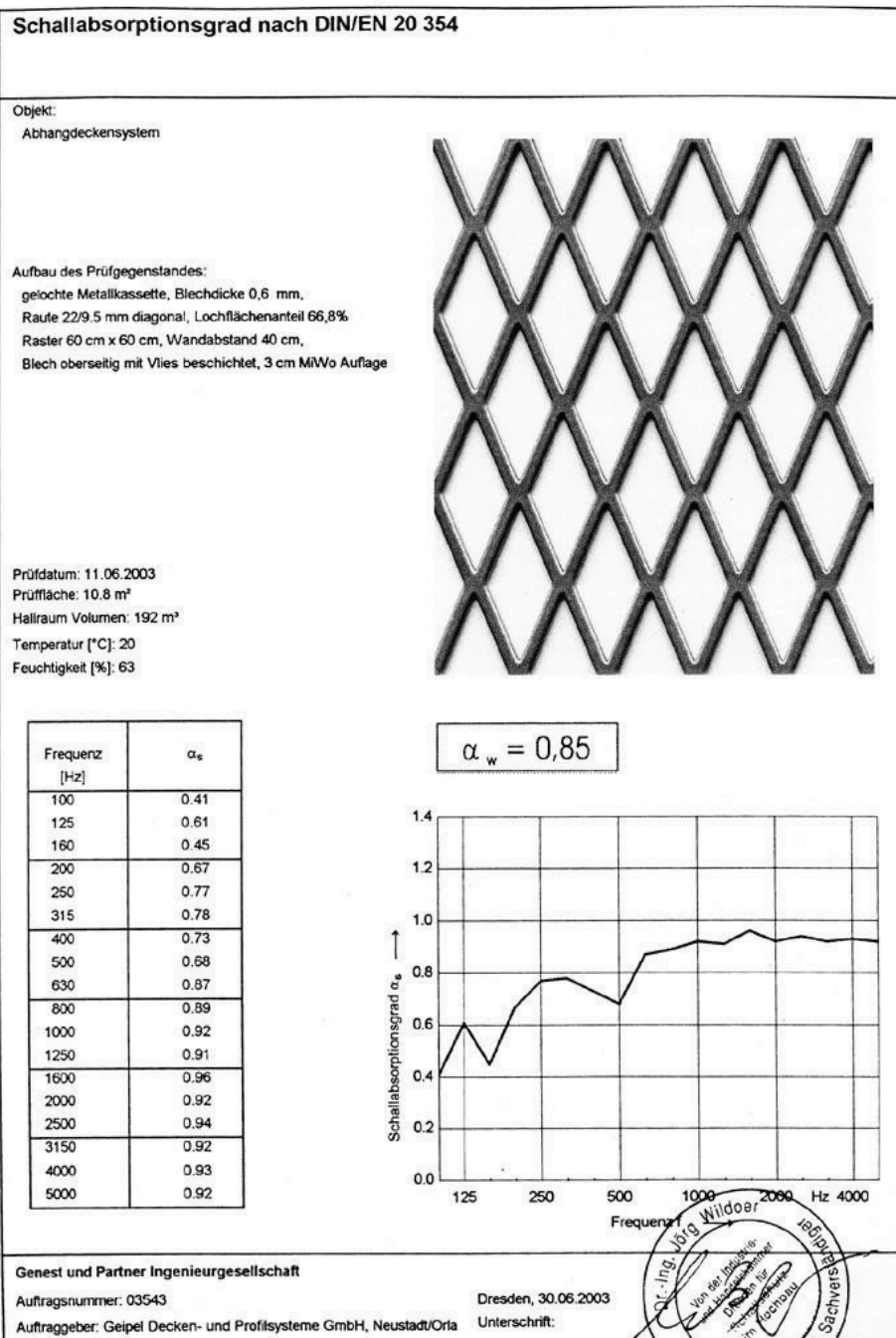
# TEST REPORTS ON NOISE ABSORPTION

## GEIPEL mesh perforation

perforated metal tile,  
mesh 22/9.5 mm, diagonal,  
grid 60 x 60 cm,  
sheet covered with fleece on the top side

sheet thickness 0.6 mm,  
percentage of perforation area: 66.8%,  
distance to the wall 40 cm,  
**mineral wool pads of 3 cm**

Appendix 18 to the test report 03543 (Noise reduction coefficient according to DIN/EN 20 354)





## FLAT MIRROR-GRID BUILT-IN LIGHTINGS IN T5-STRUCTURE DESIGN IP 20

### I N N O V A T I O N   O F   L I G H T

Built-in lightings with most modern DARK LIGHT TECHNIQUE  
(parabol grid BAP)

- low installation height
- excellent illumination performance,  
ideal for monitor workstations
- high efficiency and optimum  
visual comfort



Built-in lighting  
in tegular design

EXPANDED METAL DESIGN

### GEIPEL – GRID BUILT-IN LIGHTINGS

A new futuristic design has been developed for our more-lamp grid built-in lightings of the T5 and T8 versions. Metal bridges are integrated between the single mirror grids and can be variably provided with different perforations matching to the individual design.

The metal bridge performed in expanded metal design, for example, is a unique development.  
It is a designer development that convinces.

#### GEIPEL mirror grid built-in lighting

- with an extremely flat casing
- with a high-quality, efficient lighting technology
- with a new futuristic design, special central bridge in expanded metal design
- with central bridges in different perforations that can be variably integrated
- suited to difficult situations with little space capacities thanks to its low installation height

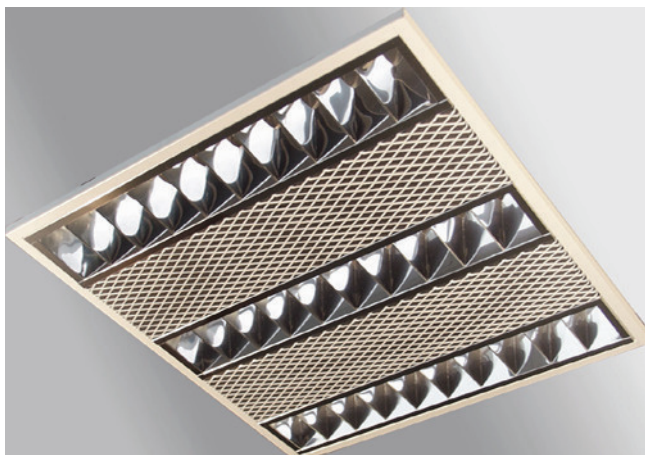
**MODULES**

- 150
- 300
- 312.5
- 600
- 625



HI-TECH from GERMANY

## FLAT MIRROR-GRID BUILT-IN LIGHTINGS IN T5-STRUCTURE DESIGN IP 20



DIRECTLY RADIATING BUILT-IN LIGHTING MODULE 625

for the installation into

- T-profile sub-structure systems MODULE 625
- three-lamp type 3 x 14 W EVG
- central bridges performed in expanded metal design (protected by industrial law)
- colour GEIPEL standard ceiling colour white
- colour identity with GEIPEL metal tile ceilings + sub-structure system



DIRECTLY RADIATING BUILT-IN LIGHTING MODULE 625

for the installation into

- T-profile sub-structure systems MODULE 625
- in tegular design with 8 mm tegular edge
- three-lamp type 3 x 14 W EVG
- central bridges performed in expanded metal design (protected by industrial law)
- colour GEIPEL standard ceiling colour white



DIRECTLY RADIATING BUILT-IN LIGHTING MODULE 300

for the installation into gypsum board ceilings

- (combined with fixation angles) MODULE 300
- two-lamp type 2 x 24 W EVG
- central bridges perforated
- colour GEIPEL standard ceiling colour white
- colour identity with GEIPEL metal tile ceilings + sub-structure system

## GEIPEL – GRID BUILT-IN LIGHTINGS

GEIPEL - GRID BUILT-IN LIGHTINGS meet the sophisticated demand for high quality and innovation.

Newly developed designs combined with a large variety characterise our lightings.

The DARK LIGHT GRIDS consist of high gloss, anodised pure aluminium.

The grid is sustained and hinged down by concealed special spring clips.

The cross strips and lateral reflectors have a parabol shape.

- limitation of luminance density  $L < 200 \text{ cd/m}^2$  above the radiation angle of between  $50^\circ$  and  $60^\circ$  to the vertical line (completely de-dazzled)

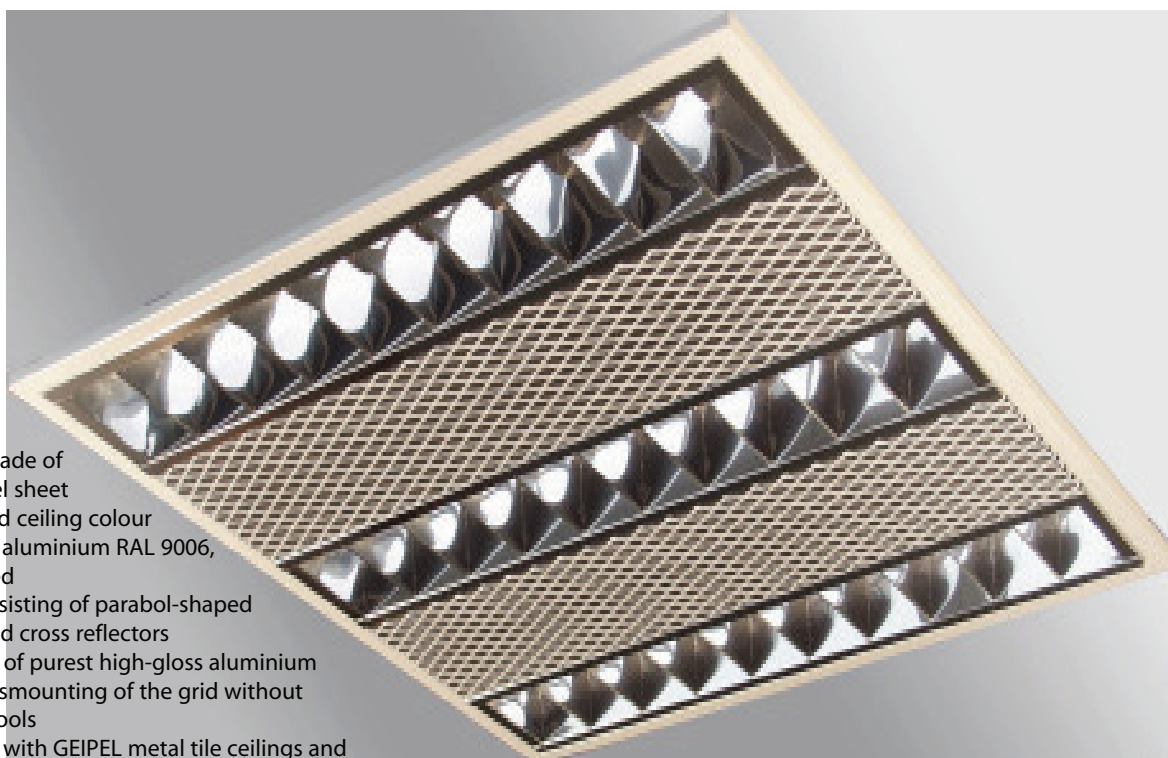
They are suited for monitor workstations, workstations with monitor support, offices, banks, shopping centres, exhibition rooms, galleries, schools, administration buildings, sports facilities, hotels and shops.



## FLAT MIRROR-GRID BUILT-IN LIGHTINGS IN T5-STRUCTURE DESIGN IP 20

### MODULE

- Lamp casing made of galvanized steel sheet
- GEIPEL standard ceiling colour white or white aluminium RAL 9006, stove-enamelled
- Mirror grid consisting of parabol-shaped longitudinal and cross reflectors
- Grid consisting of purest high-gloss aluminium
- Comfortable dismounting of the grid without requiring any tools
- Colour identity with GEIPEL metal tile ceilings and sub-structure systems



EXPANDED METAL DESIGN  
(protected by industrial rights)

3 x 14W VSA

### GEIPEL - GRID BUILT-IN LIGHTINGS

MODULES • 600 • 625

MODULE • 600	Article code	Length x width x height (mm)	Axis measure	Lamps	Weight
	SEL 600 2T 16 - 14 E	592 x 592 x 60	600	2 x 14W T5	4.9 kg
	SEL 600 3T 16 - 14 E	592 x 592 x 60	600	3 x 14W T5	5.3 kg
	SEL 600 4T 16 - 14 E	592 x 592 x 60	600	4 x 14W T5	5.7 kg
MODULE • 625					
	SEL 625 2T 16 - 14 E	8617 x 617 x 60	625	2 x 14W T5	5.3 kg
	SEL 625 3T 16 - 14 E	617 x 617 x 60	625	3 x 14W T5	5.7 kg
	SEL 625 4T 16 - 14 E	617 x 617 x 60	625	4 x 14W T5	6.1 kg

HI-TECH from GERMANY

# REFERENCE OBJECTS

## Offices / Administration buildings / Banks

### Foreign countries

- Greece, National Bank, Athens
- Netherlands, Amsterdam, Triade Tower
- Netherlands, Nieuwegein, town hall
- Israel, Hamizrahi Bank
- Israel, government building
- Austria, Vienna, Andromeda Tower
- Latvia, Leipaeia, Latvia-Bank
- Russia, Kreml, Moscow
- Russia, Town hall of Saratow, Moscow
- Czech Republic, Prague, office building "Goldener Engel"
- Czech Republic, Prague, Hewlett-Packard
- Czech Republic, Prague, Office Park Butovice
- Czech Republic, Prague, Office Park Hadovka
- Ukraine, Kiev
- United Arab Emirates, Al-Gurg-Tower Dubai
- United Arab Emirates, Commercial Bank of Dubai
- United Arab Emirates, National Library Dubai
- Cyprus, Helenic Bank, Nicosia

### Germany

- Augsburg, pension insurance office building
- Berlin, Federal Ministry of Economics
- Bonn-Hardthöhe, Ministry of Defence
- Bremen, Melitta
- Frankfurt/Main, Commerzbank
- Glashütte, watch factory Lange & Söhne
- Cologne, Stollwerck house
- Leipzig, Commerzbank
- Leipzig, branches of the Dresdner Bank
- Munich, Siemens office building
- Munich-Ismaning, office building
- Munich, Paul-Gebhard-Allee, office building
- Neubrandenburg, Land social insurance office
- Osnabrück, German Pharmacists' and Physicians' Bank
- Wesel, Sparkasse
- 15 Dekra branches in Germany

## Public facilities / Industry and Trade

### Foreign countries

- Kazakhstan, Almaty, City Centre
- Latvia, Riga, Torgowyicentr "Citi-Market"
- Lithuania, Kaunas, shopping center
- Austria, Graz, Volvo car dealer
- Austria, Vienna, T-Mobile and Zugspitze
- Philippines, Nestlé Manila
- Russia, Moscow, underground





## REFERENCE OBJECTS

- Russia, St.-Petersburg, underground
- Czech Republic, Prague, department store
- Czech Republic, several TOROL petrol stations
- Cyprus, showroom of Peugeot
- Cyprus, showroom of Mitsubishi
- Ukraine, Kiev, railroad station "Jushnyi"
- Ukraine, Kiev, Metrograd
- Ukraine, Kiev, Opel car dealer

### Germany

- Amberg, slaughterhouse
- Berlin, Daimler Centre
- Bitterfeld, Chemiepark (Chemistry park)
- Deggendorf, City-Center
- Gera, Gera Arcades
- Jena, Goethe Gallery
- Jena, Jenapharm
- Koblenz, Loehrcenter
- Leipzig, Gewandhaus
- Leipzig, Porsche factory
- Mannheim, pedestrian passage ALDI - McDonald's
- Munich, Amar Center
- Munich, BMW administration building
- Munich, Cerruti
- Munich, kitchen expert designer
- Munich, Paulaner Bräu
- Ueckermünde, Haffpassagen
- Neuhaus, HTP Pharma Packaging
- Nuremberg/Fürth, bus stop
- Regensburg, BMW factory
- Rendsburg, caravan factory Fockbek
- Rostock, Microbiology
- Schleiz, arcades
- Schwerin, fire-brigade building
- Schwerin, castle park residence
- Wernesgrün, brewery
- Wolfsburg, VW factory
- Zwickau, Mercedes car dealer Lueg

### Airports

#### Foreign countries

- Egypt, Airport Cairo
- Slovakia, Airport Bratislava
- South-Africa, Airport Johannesburg

#### Germany

- Airport Düsseldorf
- Airport Frankfurt/Main
- Airport Cologne-Bonn

### Fair and Conference centres



## REFERENCE OBJECTS

### Foreign countries

- Russia, fair centre, Moscow

### Germany

- Fair centre, Berlin
- Fair centre, Munich
- Fair centre, Leipzig

### Hotels / Casinos

#### Foreign countries

- Luxembourg, city of Luxembourg, Hotel “Royal”
- Russia, St.-Petersburg, three casinos
- Czech Republic, Prague, Hotel “Don Giovanni”
- Czech Republic, Prague, Hotel “Four Seasons”
- Czech Republic, Prague, Hotel “Mövenpick”

#### Germany

- Berlin-Tegel, Novotel
- Dresden, Hotel Merkur
- Frankfurt/Main, Parkhotel
- Hamburg, Etap-Hotel
- Mülheim, Casino
- Nuremberg, Airporthotel Mövenpick
- Nuremberg, Novotel

### Universities / Schools / Sports halls

#### Foreign countries

- England, University York
- Finland, University Turku
- Netherlands, Den Bosch, Ecco Stadion - Den Bosch
- Cyprus, Laiki Sporting club

#### Germany

- Bad Salzungen, Werratal barracks of the German federal armed forces
- Berlin-Spandau, music school
- Bohlendorf, barracks for armed forces
- Jena, higher technical college
- Jena, Friedrich Schiller University
- Merseburg, higher technical college
- Prangendorf, barracks of the German federal armed forces





## REFERENCE OBJECTS

- Punitz, primary school
- Rostock, PSV sports hall
- Schwabach, sport promoting centre
- Schwerin, secondary school Schiemann-Gymnasium
- Schwerin, school Muessner Berg
- Wernigerode, higher technical college Harz Audimax
- Wilhelmshafen, navy school

### Clinics / Hospitals / Chemist's shops

#### Foreign countries

- Czech Republic, Prague, IKEM hospital

#### Germany

- Donaustaff, district hospital
- Dresden, home for physically disabled persons
- Hanover, Annastift
- Jena, university hospital
- Kiel, hospital
- Memmingen, clinical complex
- Munich, AOK branch
- Nortorf, seniors center
- Regensburg, regional clinical complex
- Roth, district hospital
- Weißen, rehabilitation hospital
- Würzburg, university hospital
- Würzburg, hospital for women
- Zeitz, district hospital
- more than 80 chemist's shops in Thuringia, Saxony, Hesse and Bavaria

### Media

- Berlin, Sony Centre
- Deggendorf, Multi-Kino (cinema)
- Itzehoe, publishing house
- Cologne, Harald Schmidt studio
- Mannheim, Cinemaxx cinemas
- Munich, Bavarian radio and television
- Potsdam, film archive of ORB-Potsdam/Babelsberg



## SITE + ADDRESS



- G E I P E L – a name that has been standing for a lot of years for:
- creativity and innovation
  - future-oriented way of thinking, constructing and working
  - common dynamic product development between designers, constructors, architects and employees.
- G E I P E L – a family-owned corporation based on the tradition and experience gained by the engineering factory Erich Geipel which has been developed to a world-wide successfully operating company under the leadership of Udo Geipel in the second generation since 1980.

### **G E I P E L Decken- und Profilsysteme GmbH**

Molbitzer Weg 1, D-07806 Neustadt/Orla, Germany

Telephone +49 (0) 3 64 81 – 2 06-0  
Fax +49 (0) 3 64 81 – 2 06-50 / -33 / -55  
Email [service@geipel-germany.de](mailto:service@geipel-germany.de)  
Internet <http://www.geipel-germany.de>

